



Ibexa / Cohesivo Roadmap Update 2026

Deep dive in the Product Roadmap
for 2026 & beyond



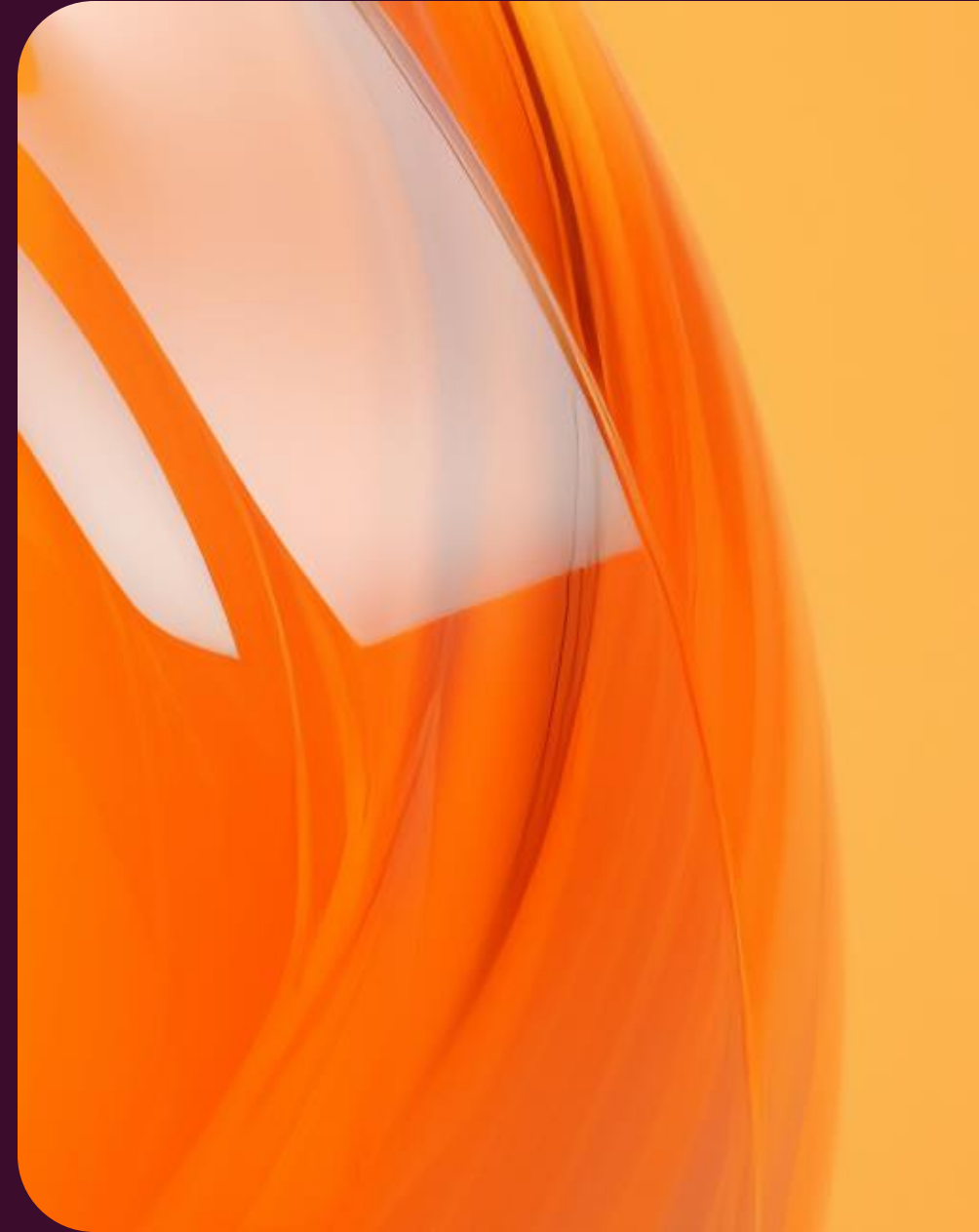
Speaker



Radoslaw Zep
Director of Product
Ibexa

Agenda

- Recap of 2025 – Ibexa DXP v5 LTS release & updates
- Strategic Roadmap Ibexa / Cohesivo
- Key Planned Features Highlights
- Summary



Ibexa DXP v5 key milestones & recent updates



Jul 25

V5 LTS release

- AI framework & actions
- AI actions using Ibexa Connect
- Discounts
- Collaboration: Shared content work
- New attribute types
- Modern Tech Stack (Symfony 7.3, PHP 8.3)
- New Security layer
- OpenAPI support for REST and many more...

Aug 25

v5.0.1

- Solr 9 support
- Special characters in the Online Editor
- Improved content creation interface
- Stronger governance with Taxonomy Subtree Limitation

Sep 25

V5.0.2

- Chat GPT 5.0 support
- More intuitive & revamped Notifications System
- Discount indexing
- Extended REST API coverage

Oct 25

V5.0.3

- Important security fixes
- A richer PHP API for Content Types (New search criteria & sort clauses)

Dec 25

V5.0.4

- Real-time collaborative editing
- AI-powered taxonomy suggestions
- AI -Connector to Anthropic
- Enhanced Product Filtering & Product Picker Integration
- Integrated Help Center

Jan 26

V5.0.5

Infrastructure

- Support for Elasticsearch 8
- Support for Valkey & Redis
- PostgreSQL 18 support
- OpenAPI support for Collaborative editing REST APIv

Ibexa/Cohesivo – Key strategic objectives for 2026

Multi-market growth

Shorten time to launch Multi-channel, multi-language and multi-brand digital projects

#Translations optimization
#SiteContext
#Insights

AI acceleration

Boost Marketers **productivity & Automate** time-consuming editorial tasks

#AgenticAI #TacticalAI
#GEO #MCP #DigitalAutonomy

Unified composable platform

Unified, integrated & easy to use interface & ecosystem for Marketers

#UX/UI Harmonization #SSO
#Premium integrations
#MarketerExperience
#Composable

NOW

NEXT

LATER

Multi-market
Growth

Translation integration plugin

Translation Hub -
Insights

Data Intelligence Layer

Insights Dash board for Editors

Side-by-side translations

Bulk translation

A/B testing for Content

Content completeness & configuration

Multiple Shopping Lists

Site Context

Adapt Admin UI
to right-to-left writing

Professional translation
for MSA language

AI
Acceleration

Google Gemini
Connector

SEO & Discoverability
Assistant

Brand & Messaging
Guardrails

Localization Quality &
Consistency Assistant

AI summary of changes
for content versions

Smart AI Image
suggestions

MCP server framework

SEO Optimization Agent

Landing Page Creation
Agent

GEO-ready content

GEO Optimization Agent

Social Distribution
Agent

Integration with AI Orchestration Platform

Unified Composable
Platform

Integrated Recommendations –
complete set of blocks

Integ Recommendations –
regular content types
personalization

Integrated CDP - Segments
& Customers data enrichment
& synch

Integ Recommendations –
Goals & Performance metrics

Headless
Page Builder

Integrated Quable PIM–
product data sync & embedding

Integrated Quable PIM–
assets synchronization &
management

Integrated CDP –
Segmentation of anonymous
users

Integrated CDP- Audience-
driven Personalized content

UX/UI Harmonization – Login page & App switcher

UX/UI Harmonization –
Navigation

Asynchronous
operations

Design System
(next steps)

Single Sign-on



WHAT'S COMING

Key Planned Features Highlights

MANAGE YOUR FULL TRANSLATIONS JOURNEY

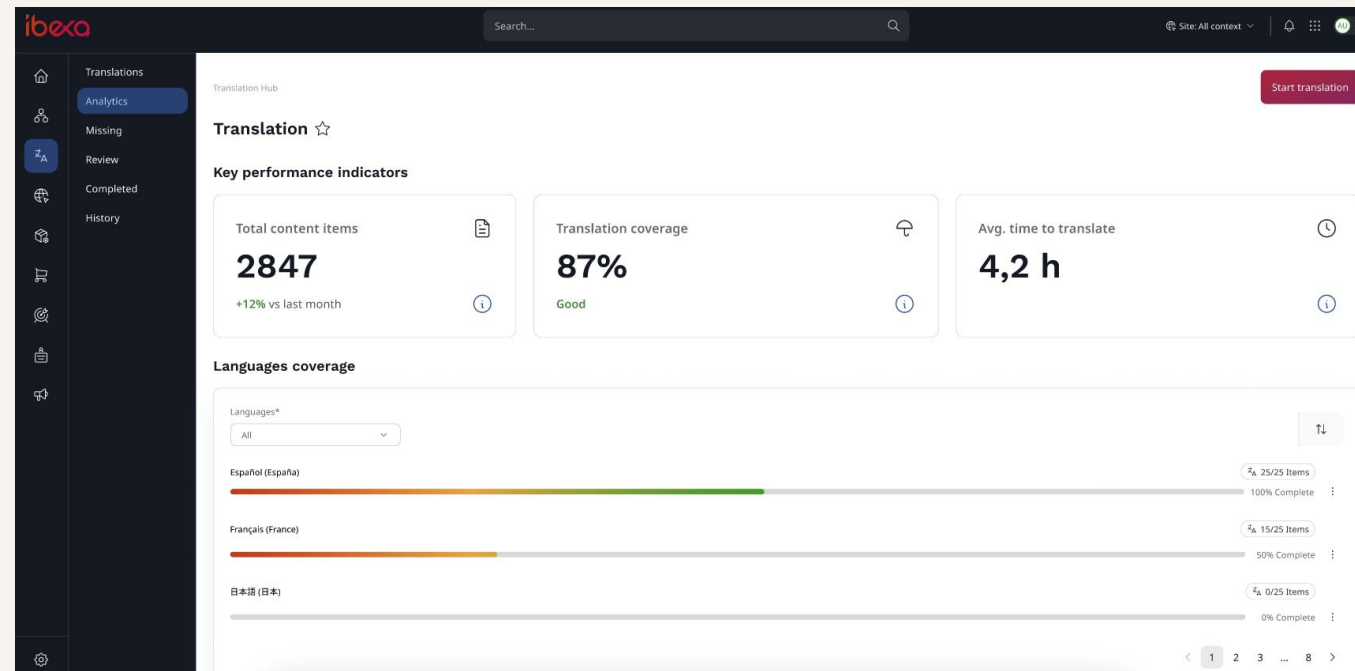
Translation Hub

The Translation Hub is the central place for all translation-related actions:

- Metrics and KPIs
- Translation jobs
- Bulk operations

Value:

A single, clear overview that helps stay in control of multilingual content landscape and perform actions to improve content.



Anna Kaihorodova

Join to learn more!

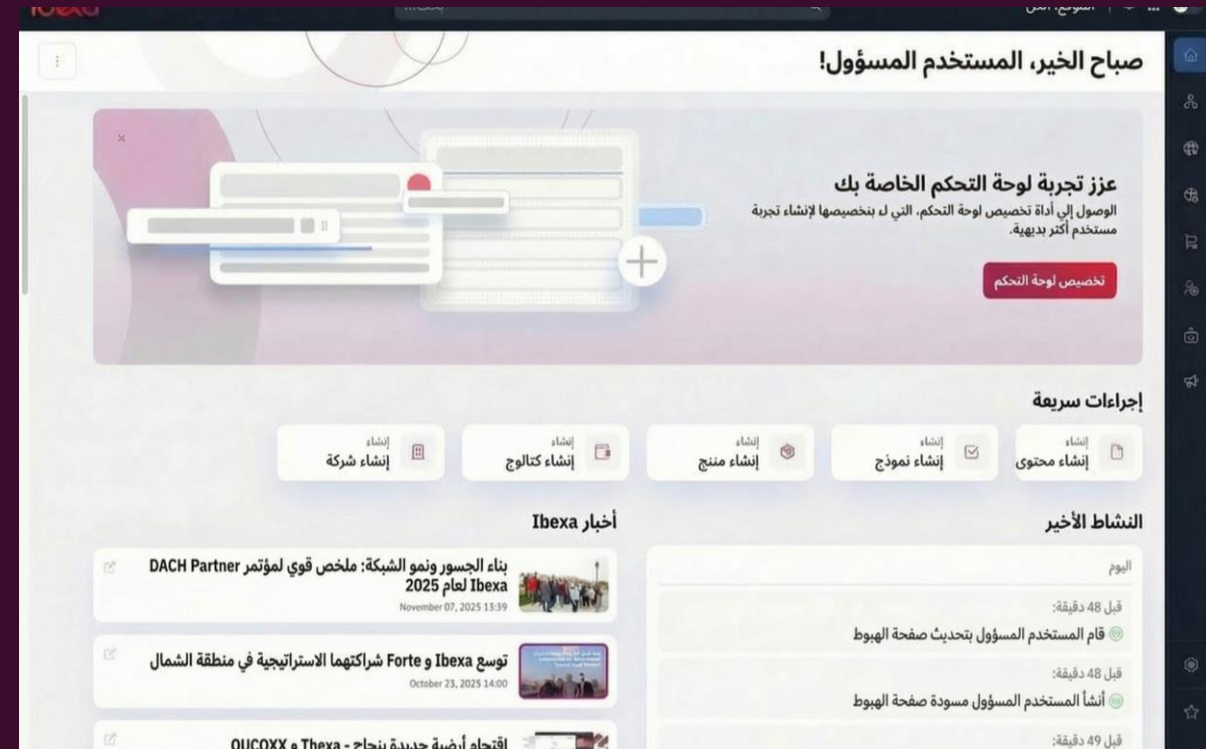
Translation Hub: The new era for multi-language tasks

Day 2 10:30 – 11:00 | Tech Melody Track

MULTI-MARKET GROWTH

Right-to-Left languages support & Modern Standard Arabic (MSA) Localization

- Translation of all terminology
- Full translation of all UI strings (menus, buttons, labels, messages, tooltips, validation errors) to MSA
- Automatic layout mirroring when MSA is selected
- Seamless support in the Online Editor
- Improved URL alias generation that gracefully handles MSA



Value:

Boost usability, adoption, and productivity by delivering a seamless RTL & MSA interface that feels native from end to end

MULTI-MARKET GROWTH

Insights Dashboard for Editors

- Allow authoring, review, localization and delivery
- Monitor status, detect bottlenecks, and improve outcomes in one place
- Empower marketers, content editors, and localization teams with data-driven decisions

Value:

Visibility into how content is performing



Tactical AI: High-value AI-actions

Going beyond Text refinement

Performance



Trust & Governance



Trust & Scale

SEO & Discoverability Assistant

Key capabilities

- 🔍 SEO intent and structure validation
- 🔍 Meta and heading optimization recommendations
- 🔍 Content gap identification
- 🔍 Internal linking suggestions

Value

Transforms refined text into content optimized for measurable impact.

Brand & Messaging Guardrails

Key capabilities

- 🔍 Detect off-brand tone, wording and claims
- 🔍 Flag risky or non-compliant language
- 🔍 Suggest aligned alternatives with clear explanations

Value

Acts as a guardian of brand trust.

Localization Quality & Consistency Assistant

Key capabilities

- 🔍 Source vs target language validation
- 🔍 Terminology and CTA consistency checks
- 🔍 Detection of missing or altered meaning

Value

Reduces risk of semantic drift across markets.



AI ACCELERATION

AI Agents for internal efficiency & external engagement

Goal-driven autonomy with built-in governance and editorial control.

SEO Optimization Agent

Autonomously optimizes SEO fields for published content across all translations, using full content context.

Landing Page Creation Agent

Creates complete landing pages from predefined blueprints and hands them over to editorial workflows for QA.

GEO Optimization Agent

- 🔗 Evaluates content for GEO, validates structure, clarity and semantic completeness.
- 🔗 Checks against current best practices, and offers actionable recommendations to boost visibility.

Social Distribution Agent

- 🔗 Prepares and publishes content to selected social media channels after publication in DXP.
- 🔗 Adapts messaging per channel and language.



Adam Wójs

Join to learn more!

Empowering DXP with Autonomy: Building Agents and Assistants in Ibexa DXP

Day 2 10:00 – 10:30 | Tech Melody Track

AI ACCELERATION

GEO-ready content

Solution:

- Native content readiness layer in Ibexa DXP that structures content as machine-readable and AI-understandable knowledge.

Value:

- Content is understandable and reusable by LLMs
- Strong foundation for GEO optimisation, AI Actions and AI Agents

Key Capabilities:

- Enforces clear content structure, entities and semantics
- Schema injection: wrapping FAQ blocks in valid JSON-LD format automatically
- Embeds LLM-friendly content modeling and metadata as a native DXP capability



UNIFIED COMPOSABLE PLATFORM

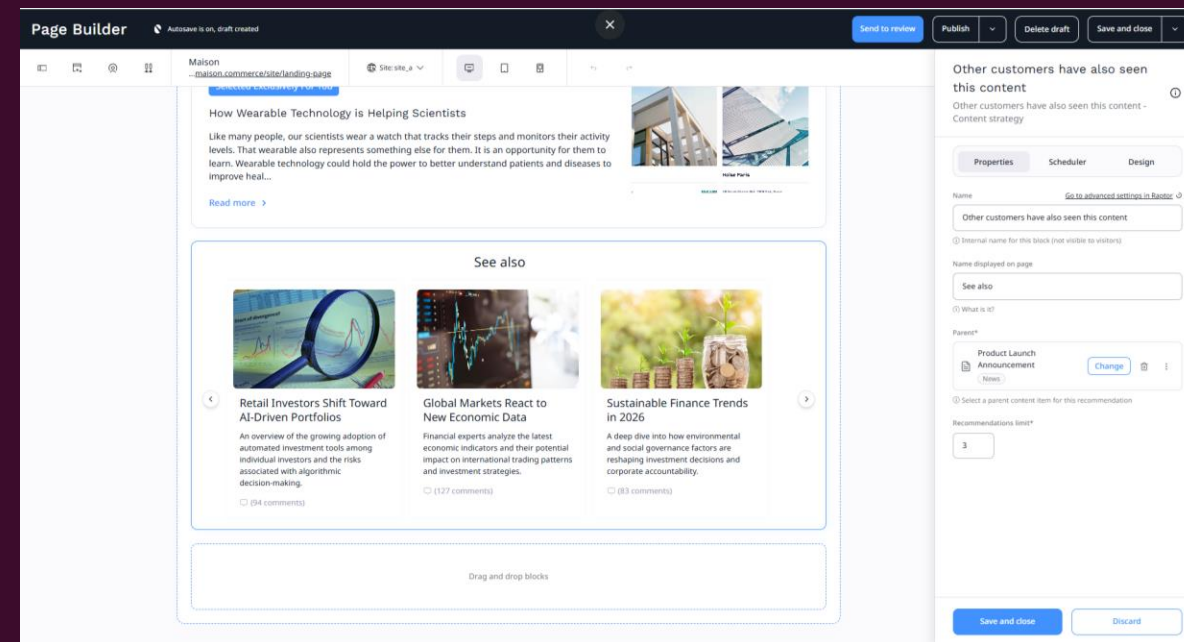
Integrated Recommendations

Value:

- Ensure accurate event tracking for supported event types to power global, contextual and user-based recommendations
- Minimize data transformation needs by aligning DXP data structures with Raptor's expected input formats
- Enable seamless integration of selected Raptor strategies into the Ibexa DXP

Key Capabilities:

- Client-side & server-side tracking/ Recommendation API/REST client
- Ibexa Connector in Recommendation Engine
- Basic set of Content & Commerce recommendations blocks in Page Builder

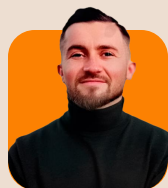
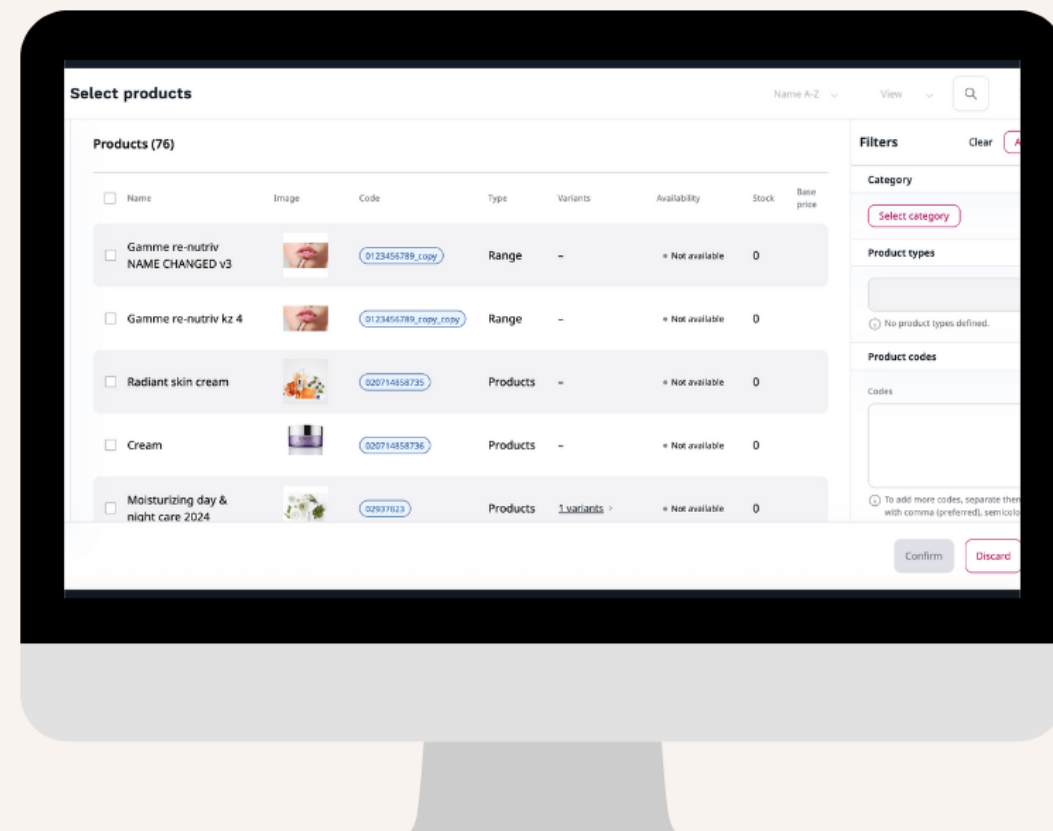


UNIFIED COMPOSABLE PLATFORM

Integrated Quable PIM

Value:

- ▶ Native, opt-in integration for automated product data sync from Quable to Ibexa
- ▶ Real-time accuracy: up-to-date product data directly usable in DXP content workflows via new embed functions
- ▶ Single source of truth for product data, reducing manual work, duplication and inconsistencies between product management and content creation
- ▶ Catalog-driven product exposure, enabling structured and scalable use of product



Radoslaw Zep



Dennis Herzing

Join to learn more!

Introduction to DXP Premium Integration: Quable & Raptor
Day1 17:15 – 17:45 | The Grow Crescendo Track



*Share Your
feedback & votes*



Thank you!
For all your insights & feedback



ibexa



actito



Quable



Qualifio



raptor